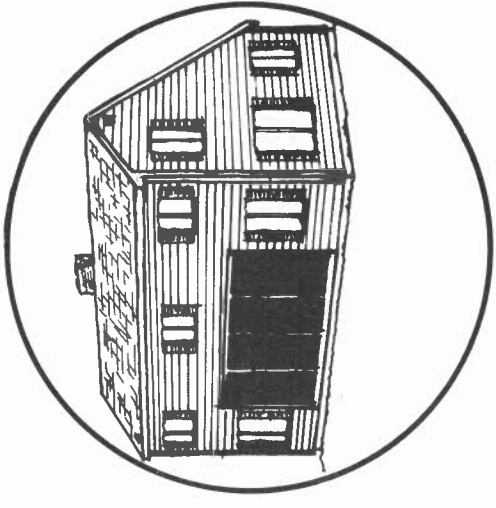
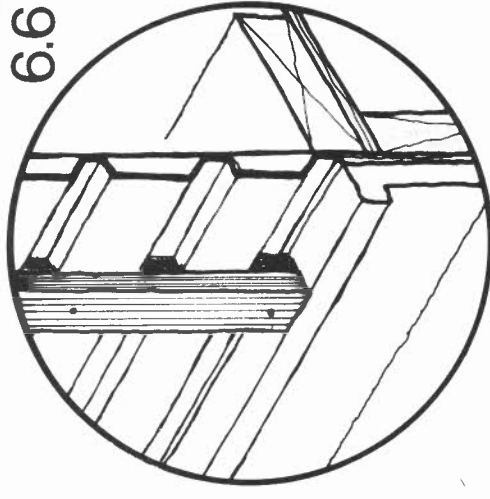
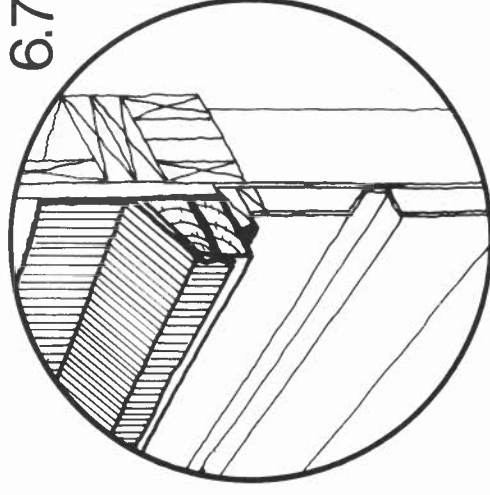
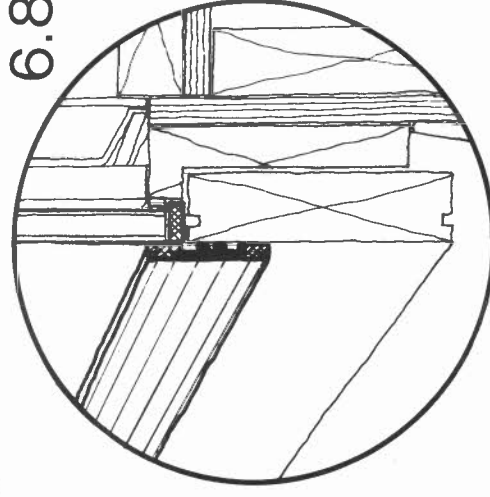
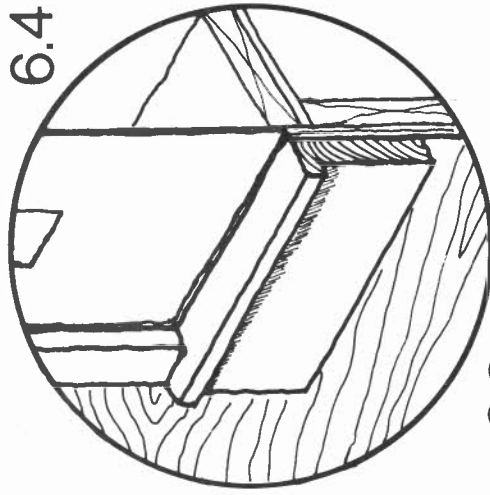
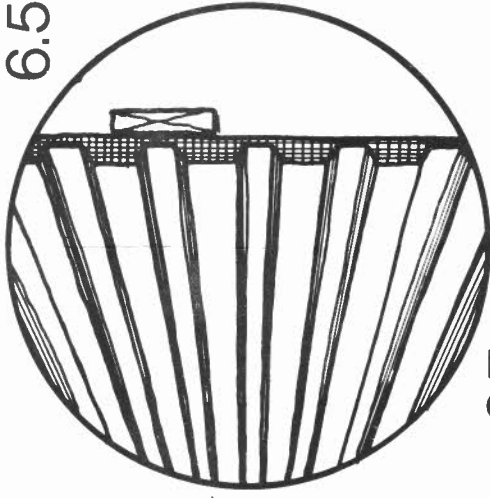
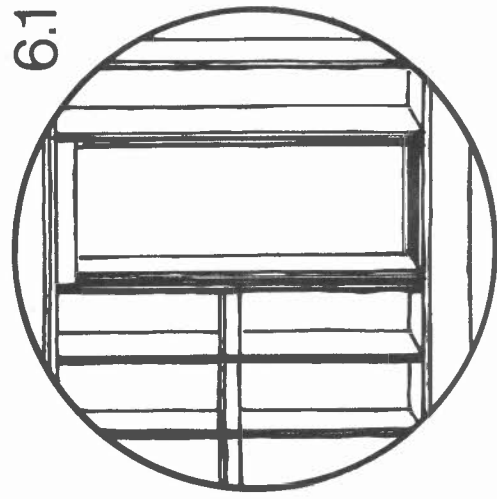
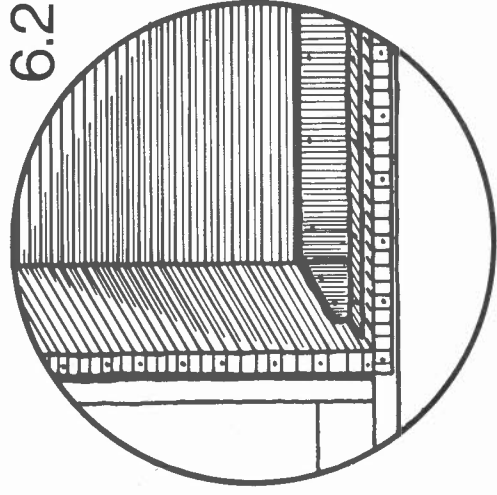
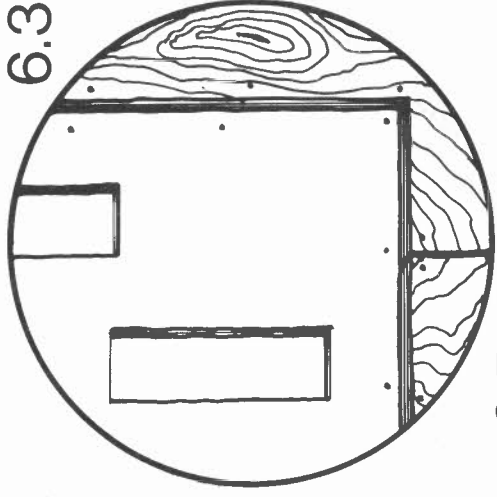


WALL COLLECTOR



CONSTRUCTION SEQUENCE:

1. FRAMING
2. MANIFOLD PANS
3. SHEATHING
4. PERIMETER BLOCKING
5. ABSORBER PLATE
6. BATTENS
7. GLAZING PREPARATION
8. GLAZING & FINISHING



Church Hill, Harrisville, New Hampshire 03450

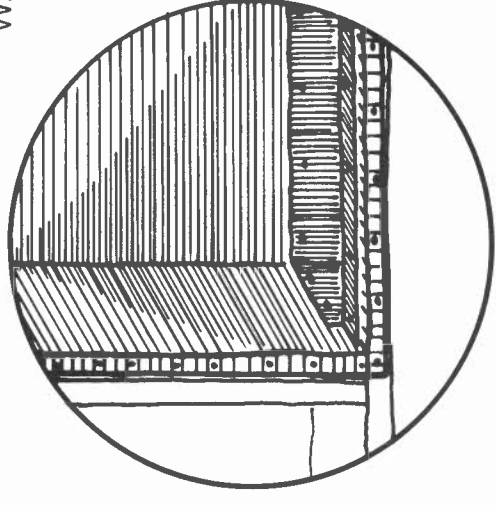
NOTICE

This design was developed for the United States Department of Energy. Neither TEA, Inc., nor the United States nor the United States Department of Energy, nor any of their employees, nor any of their contractors, subcontractors, nor their employees makes any warranty, express or implied, or assumes any legal liability or responsibility for the accuracy, completeness, or usefulness of any information, apparatus, product, or process disclosed or contained on any of these plans, or represents that its use would not infringe upon privately owned rights.

DRAWN BY: J.A. ADAMS

FEBRUARY, 1980

MANIFOLD PANS 2 WALL



MATERIALS:

PREFABRICATED MANIFOLD PANS OF 30 GAUGE GALVANIZED SHEET METAL WITH 1/2" NAILING FLANGES, OVERLAPPED AND SOLDERED AT ALL FOUR CORNERS; DUCT COLLAR INSERT FASTENERS:
 1" GALVANIZED ROOFING NAILS
 1/4" PHILLIPS PAN HEAD SHEET METAL SCREWS

CAULK AT:

CONTINUOUS, UNDER FLANGE AND TOP EDGE OF DUCT COLLAR INSERT

TOTAL ENVIRONMENTAL ACTION
INCORPORATED



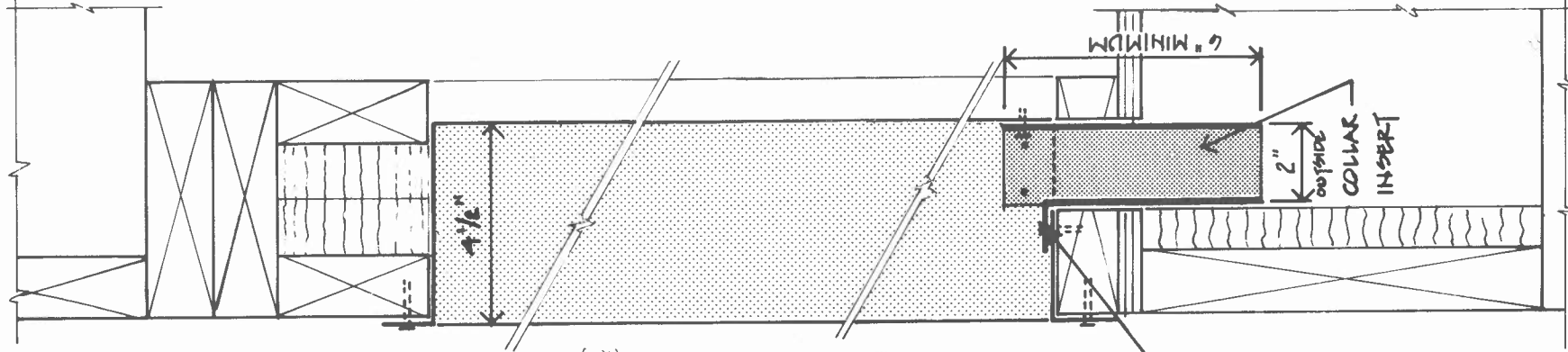
Church Hill, Harrisville, New Hampshire 03450

NOTICE

This design was developed for the United States Department of Energy. Neither TEA Inc., nor the United States nor the United States Department of Energy, nor any of their employees, nor any of their contractors, subcontractors, nor their employees makes any warranty, express or implied, or assumes any legal liability or responsibility for the accuracy, completeness, or usefulness of any information, apparatus, product, or process disclosed or contained on any of these plans, or represents that its use would not infringe upon privately owned rights.

DRAWN BY: J.A. ADAMS

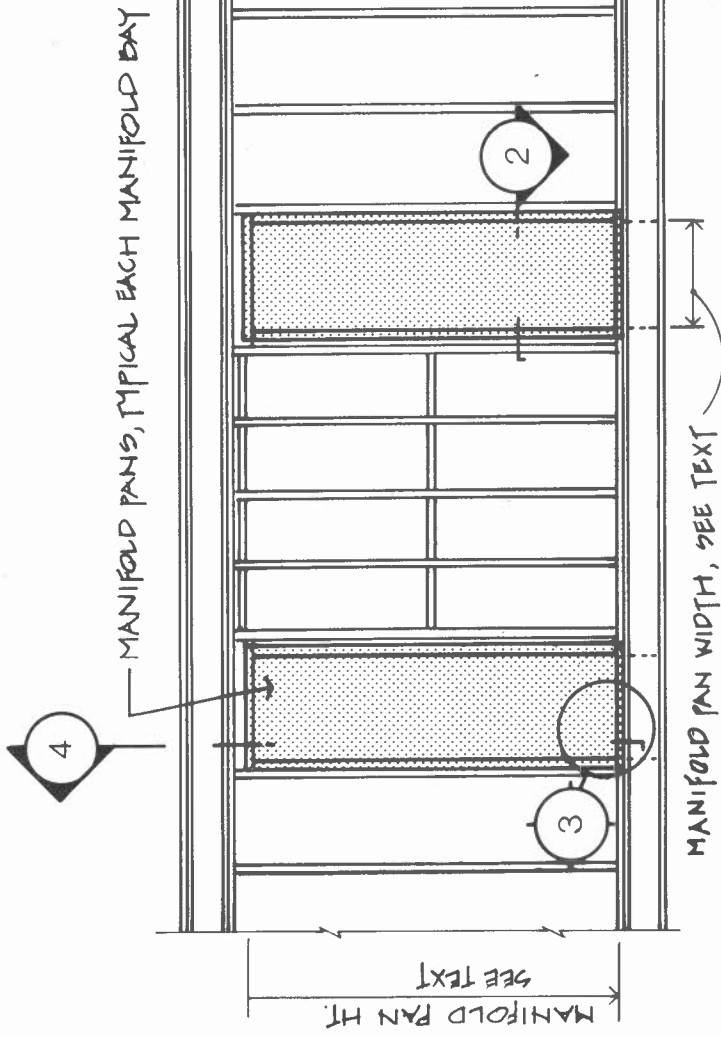
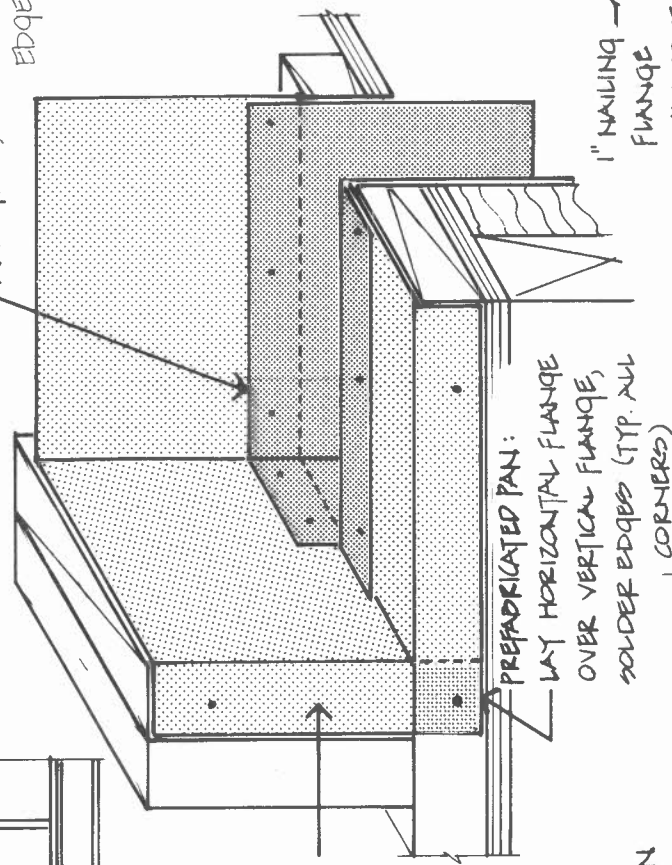
FEBRUARY, 1980



CAULK CONT. BETWEEN COLLAR AND PAN, OR SOLDER EDGE

1" NAILING FLANGE CAULK CONT. UNDER

3 TYPICAL PAN CORNER OVERLAP SCALE: 3" = 1'-0"



1 MANIFOLD PANS SCALE: 1/4" = 1'-0"

1/2" NAILING FLANGE (TYP. ALL SIDES)

OUTSIDE

1" GALV. ROOFING NAILS AT 6" O.C. AROUND NAILING FLANGES

1/4" SHEET MET. SCREWS AT 6" O.C. AROUND TOP OF COLLAR

MANIFOLD PAN

COLLAR INSERT

CONT. CAULK BETWEEN

OUTER MANIFOLD STUD

INNER MANIFOLD STUD

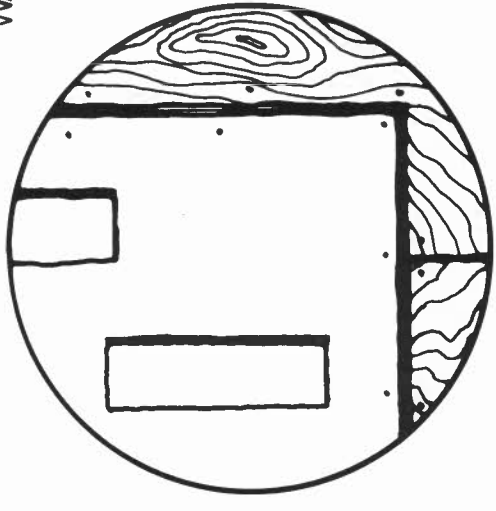
INSIDE

2 PAN SECTION SCALE: 3" = 1'-0"

4 COLLAR INSERT SCALE: 3" = 1'-0"

SCALE: 3" = 1'-0"

SHEATHING 3 WALL



MATERIALS:

- 4x8 SHEETS OF SUPER-STRENGTH (BLUE) THERMO-PLY™
- 4x8 SHEETS 1/2 CDX PLYWOOD

FASTENERS:

- THERMO-PLY: 1" GALVANIZED ROOFING NAILS OR 7/16" CROWN-DIVERGENT STAPLES
- PLYWOOD: 6d-2 1/2" COMMON NAILS

CAULK AT:

- (1) OVER MANIFOLD FLANGES OF MANIFOLD PANS
- (2) BETWEEN SEAMS IN THERMO-PLY
- (3) BETWEEN SEAM AT INTERSECTION OF PLYWOOD AND THERMO-PLY.



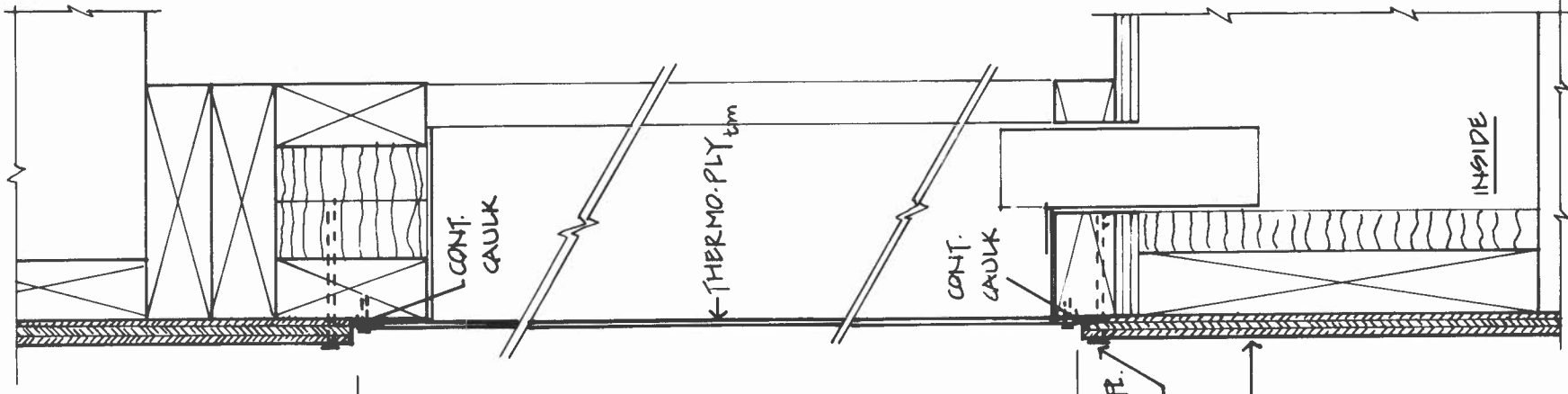
TOTAL ENVIRONMENTAL ACTION
Incorporated

Church Hill, Harrisville, New Hampshire 03450

NOTICE
This design was developed for the United States Department of Energy. Neither TEA Inc., nor the United States nor the United States Department of Energy, nor any of their employees, nor any of their contractors, subcontractors, nor their employees makes any warranty, express or implied, or assumes any legal liability or responsibility for the accuracy, completeness, or usefulness of any information, apparatus, product, or process disclosed or contained on any of these plans, or represents that its use would not infringe upon privately owned rights.

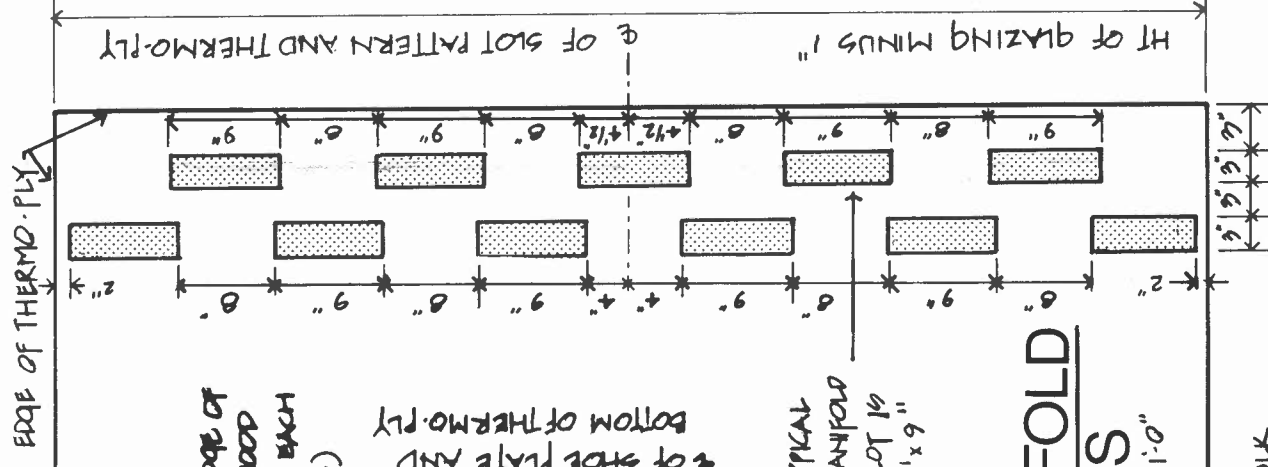
DRAWN BY: J.A. ADAMS

FEBRUARY, 1980



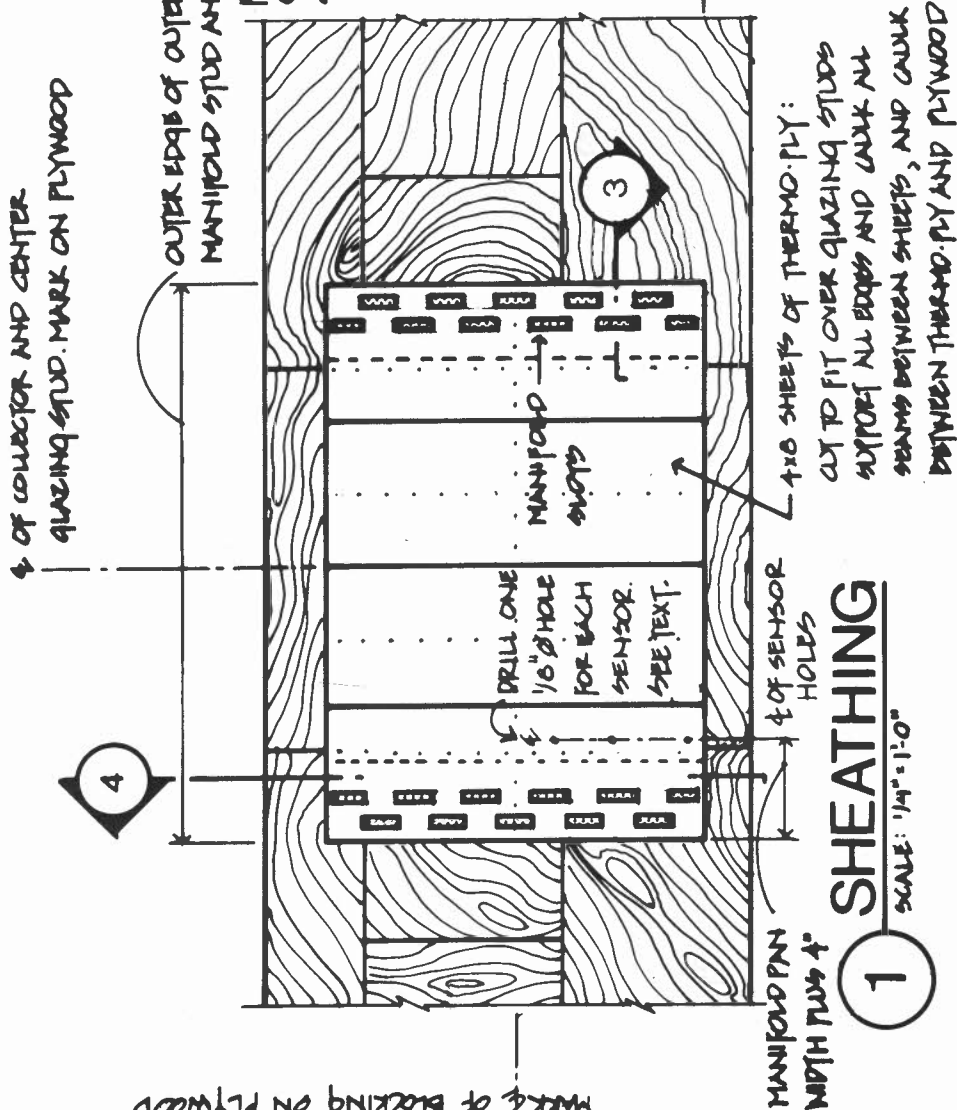
4 VERTICAL SECTION

SCALE: 3/4" = 1'-0"



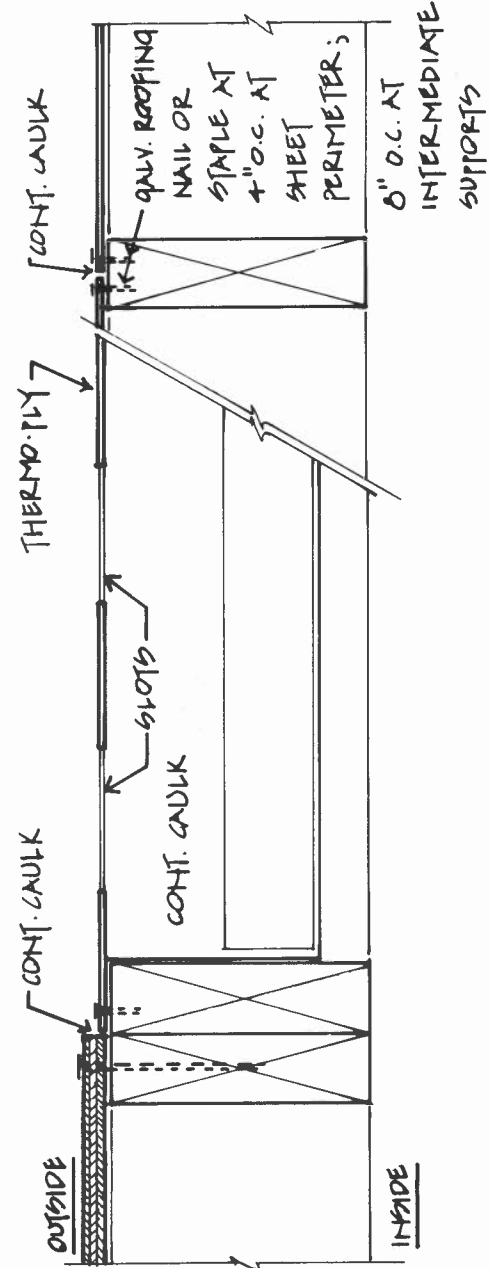
2 MANIFOLD SLOTS

SCALE: 3/4" = 1'-0"



1 SHEATHING

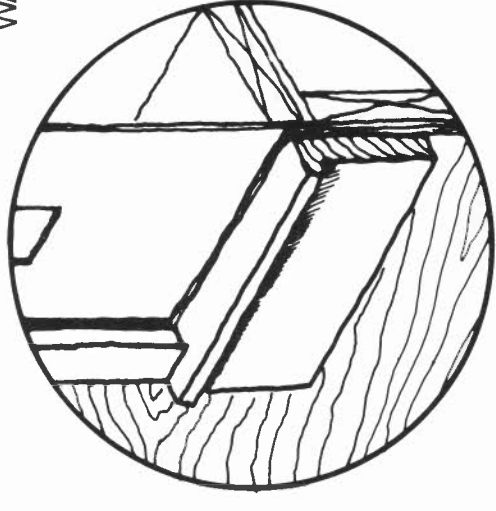
SCALE: 1/4" = 1'-0"



3 SIDE SECTION

SCALE: 3/4" = 1'-0"

PERIMETER BLOCKING 4 WALL



MATERIALS:

1x2, 1x3 AND 2x6 FIR OR SPRUCE, CUT AS SHOWN

FASTENERS:

3" DRYWALL SCREWS

CAULK AT:
NOT APPLICABLE

TOTAL ENVIRONMENTAL ACTION
Incorporated



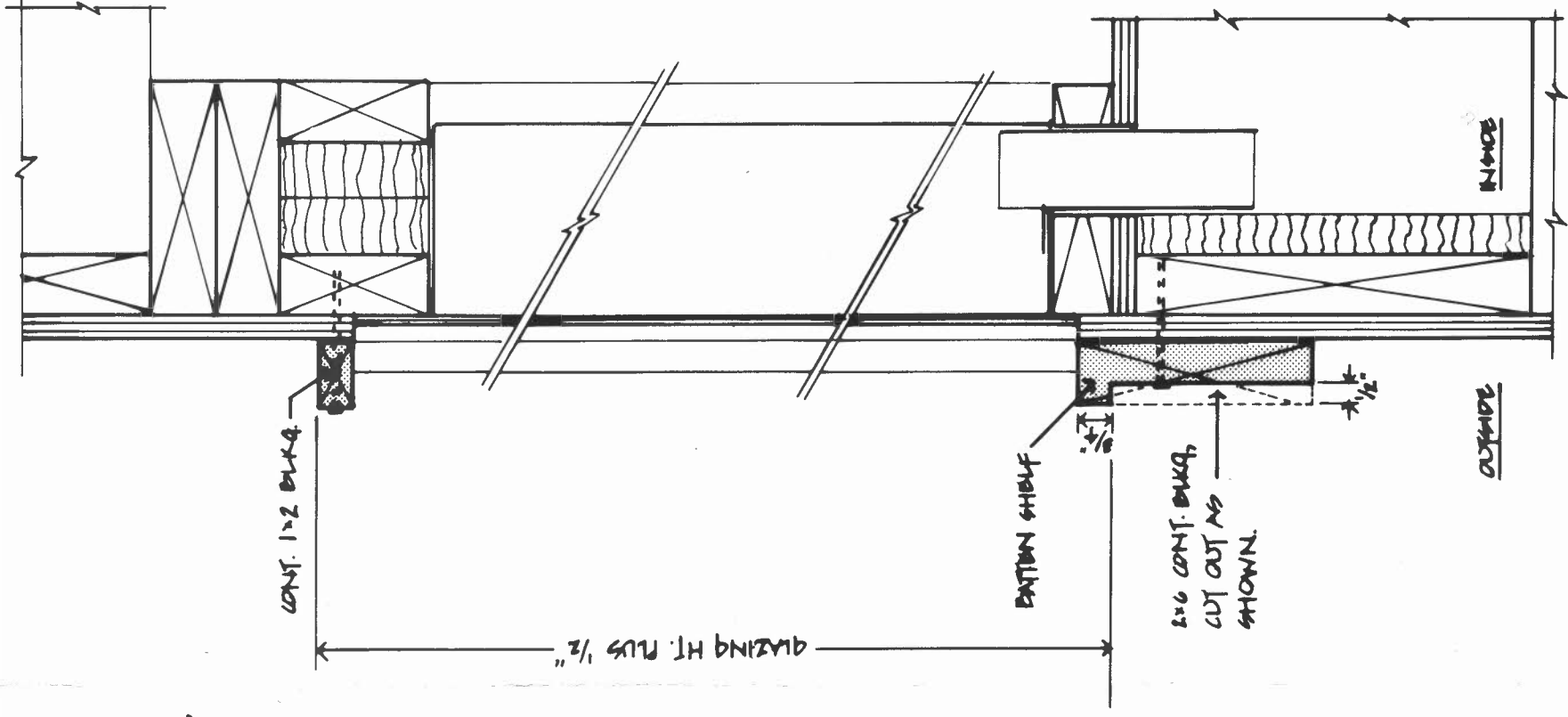
Church Hill, Harrisville, New Hampshire 03450

NOTICE

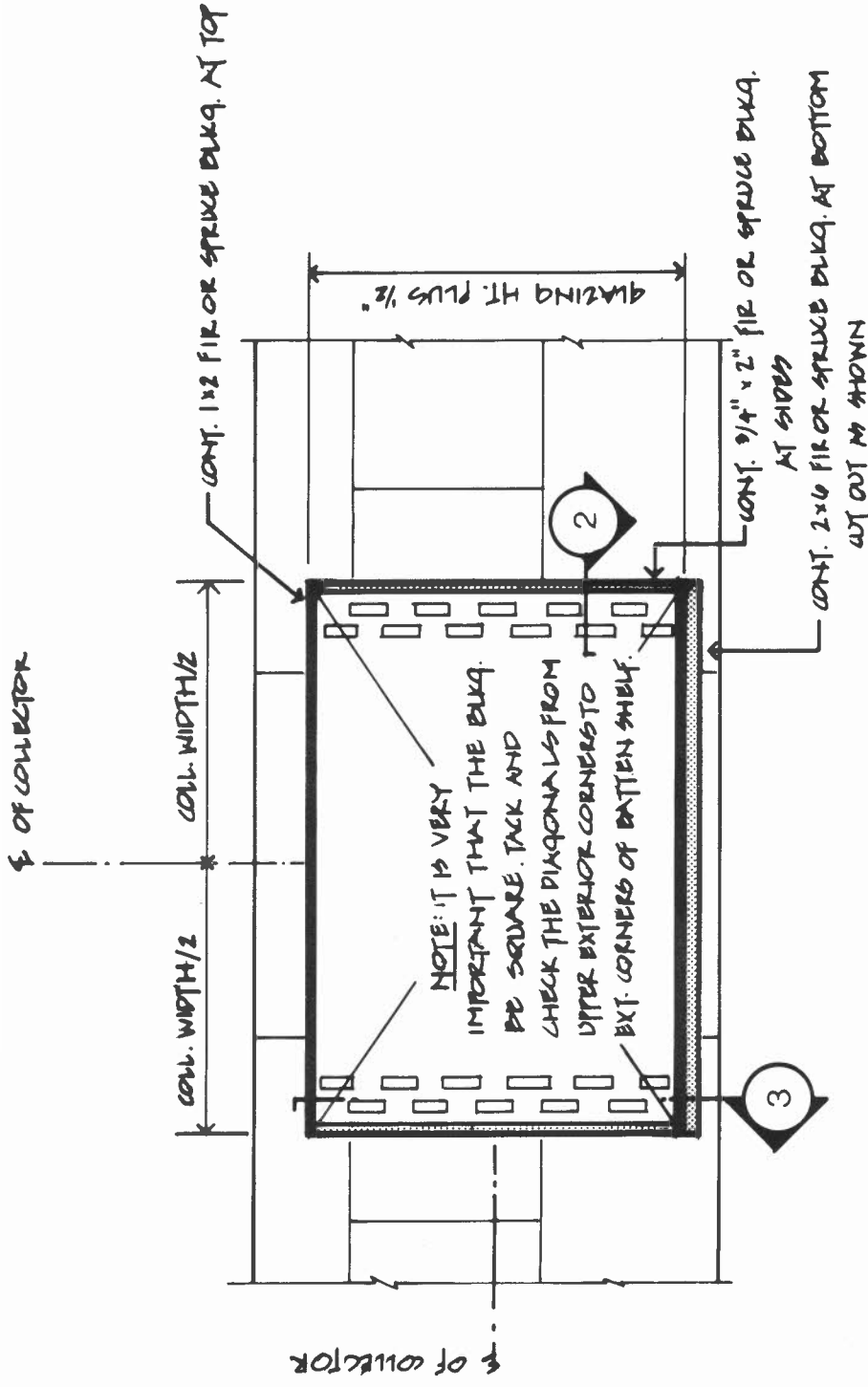
This design was developed for the United States Department of Energy. Neither TEA Inc. nor the United States nor the United States Department of Energy, nor any of their employees, nor any of their contractors, subcontractors, nor their employees makes any warranty, express or implied, or assumes any legal liability or responsibility for the accuracy, completeness, or usefulness of any information, apparatus, product, or process disclosed or contained on any of these plans, or represents that its use would not infringe upon privately owned rights.

DRAWN BY: J.A. ADAMS

FEBRUARY, 1980

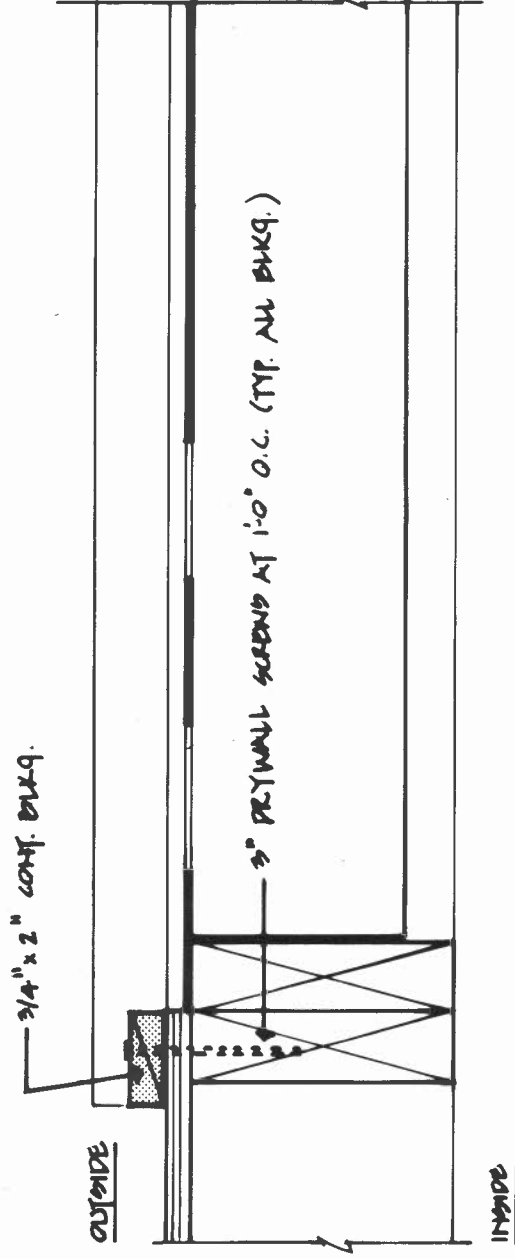


3 TOP/BOTTOM BLKG. SCALE: 3/4" = 1'-0"



1 PERIMETER BLOCKING

SCALE: 3/4" = 1'-0"

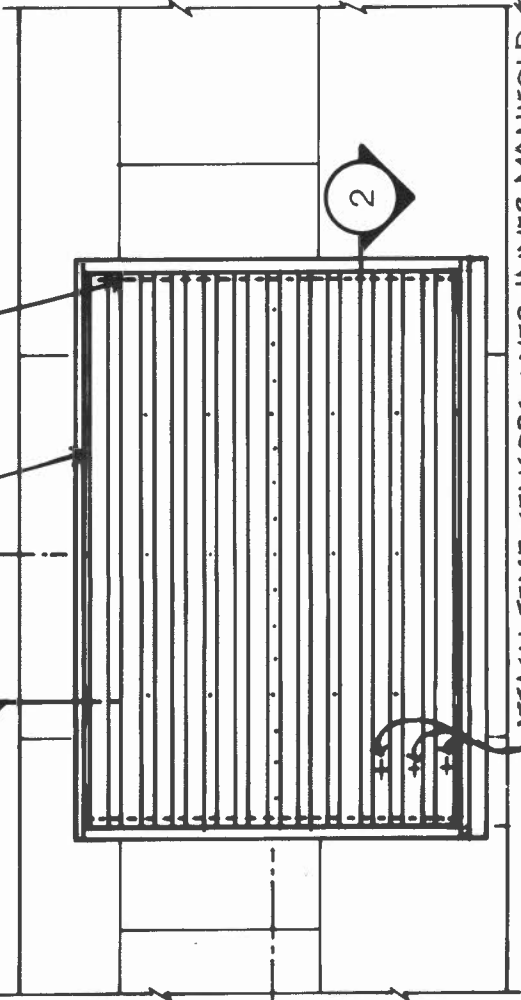


2 SIDE BLKG. SCALE: 3/4" = 1'-0"

← OF COLLECTOR

CONT. 1"x1" BULK. UNDER TOP EDGE OF ABS. PLATE

EPDM END CLOSURE STRIPS, EACH SIDE

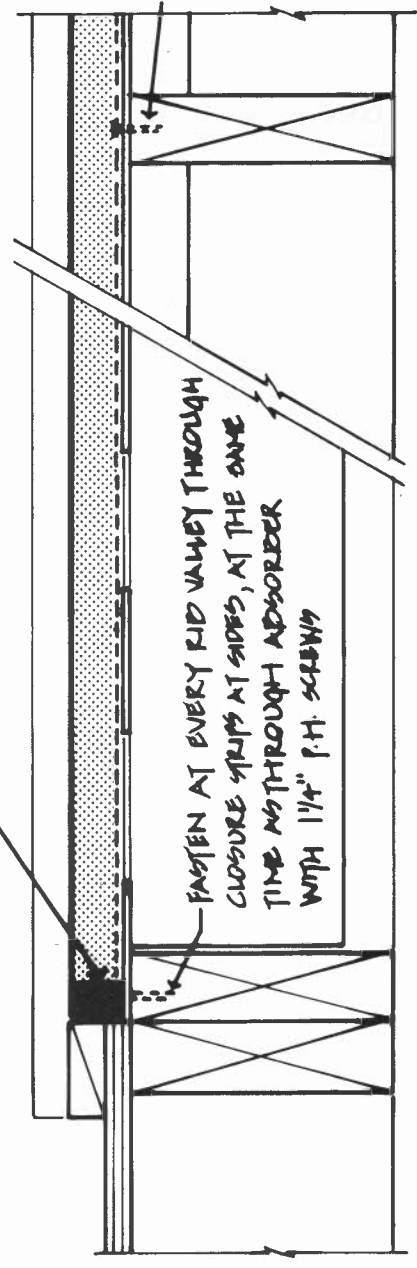


ATTACH TEMP. SENSORS, OVER INNER MANIFOLD SLOTS, TO BACK OF PLATE RIBS. SEE TEXT.

1 ABSORBER PLATE
SCALE: 1/4" = 1'-0"

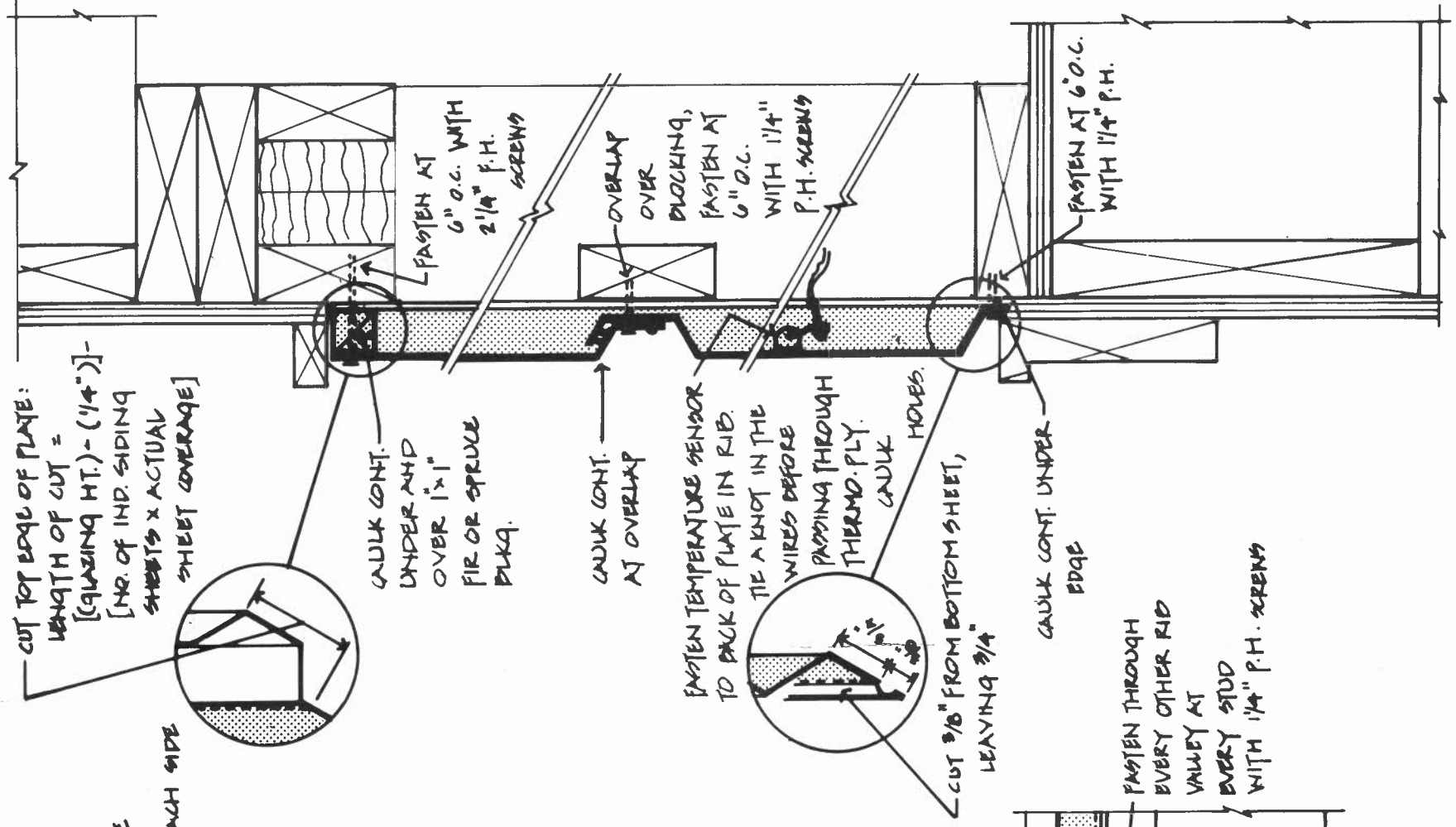
EPDM END CLOSURE STRIPS AT SIDES. CAULK BETWEEN STRIPS AND THERMO-PLY, AND BETWEEN STRIPS AND ABSORBER.

INSIDE PERIMETER BLOCKING: ALUMINUM INDUSTRIAL SIDING AS ABSORBER PLATE. CUT TOP AND BOTTOM. OVERLAP AT HORIZ. BULK. ATTACH TEMP. SENSOR. LAY OVER END CLOSURE STRIPS. PREPARE, PRIME AND PAINT ABSORBER. SEE TEXT.



FASTEN AT EVERY RID VALLEY THROUGH CLOSURE STRIPS AT SIDES, AT THE SAME TIME AS THROUGH ABSORBER WITH 1/4" P.H. SCREWS

2 END CLOSURE STRIPS
SCALE: 3/8" = 1'-0"



CUT TOP EDGE OF PLATE: LENGTH OF CUT = [(QUAZING HT.) - (1/4")] - [NR. OF IND. SIDING SHEETS x ACTUAL SHEET COVERAGE]

CAULK CONT. UNDER AND OVER 1"x1" FIR OR SPRUCE BULK.

CAULK CONT. AT OVERLAP

FASTEN TEMPERATURE SENSOR TO BACK OF PLATE IN RIB.

TIE A KNOT IN THE WIRES BEFORE PASSING THROUGH THERMO-PLY. CAULK HOLES.

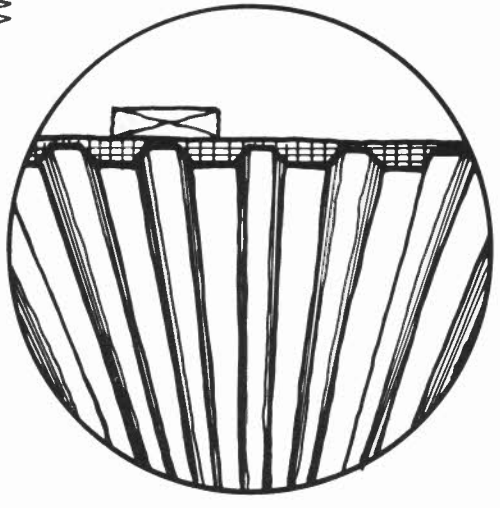
CUT 3/8" FROM BOTTOM SHEET, LEAVING 3/4"

CAULK CONT. UNDER EDGE

FASTEN AT 6 O.C. WITH 1/4" P.H.

3 TEMPERATURE SENSOR
SCALE: 3/8" = 1'-0"

ABSORBER 5 WALL
PLATE



MATERIALS: SEE TEXT FOR RECOMMENDATIONS.
(1) ALUM. INDUSTRIAL SIDING, 8" RIB, .032" GAUGE, MILL FINISH, 18" COVERAGE, & EPDM "INSIDE" END CLOSURE STRIPS, (2) TEMP. SENSORS, (3) PAINT & PRIMER (4) 1"x1" FIR OR SPRUCE BLOCKING

FASTENERS:

ALUMINUM OR 18-0 STAINLESS STEEL SHEET METAL SCREWS: #12 x 1/4" PHILLIPS PAN HEAD AND #12 x 2 1/4" PHILLIPS FLAT HEAD

CAULK AT: (CONTINUOUS)

(1) OVER AND UNDER 1"x1" BULK. AND END CLOSURE STRIPS, (2) AT OVERLAPS, (3) AT BOTTOM EDGE OF SHEETS, (4) IN SENSOR HOLE IN THERMO-PLY AND ABSORBER PLATE.



Church Hill, Harrisville, New Hampshire 03450

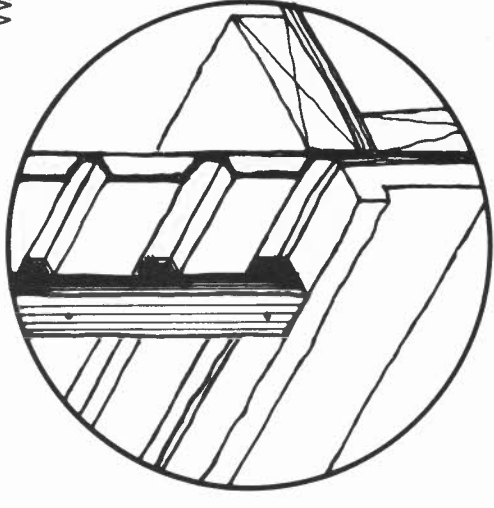
NOTICE
This design was developed for the United States Department of Energy. Neither TEA, Inc., nor the United States nor the United States Department of Energy, nor any of their employees, nor any of their contractors, subcontractors, nor their employees makes any warranty, express or implied, or assumes any legal liability or responsibility for the accuracy, completeness, or usefulness of any information, apparatus, product, or process disclosed or contained on any of these plans, or represents that its use would not infringe upon privately owned rights.

DRAWN BY: J.A. ADAMS

FEBRUARY, 1980

BATTENS 6

WALL



MATERIALS:

1x3 FIR OR SPRUCE

FASTENERS:

1. ALUMINUM OR STAINLESS STEEL #14x3" AND #14 x 1 1/2" PHILLIPS FLAT HEAD WOOD SCREWS.
2. 3" DRYWALL SCREWS (FOR SIDE BATTENS ONLY)

CAULK AT:

NOT APPLICABLE



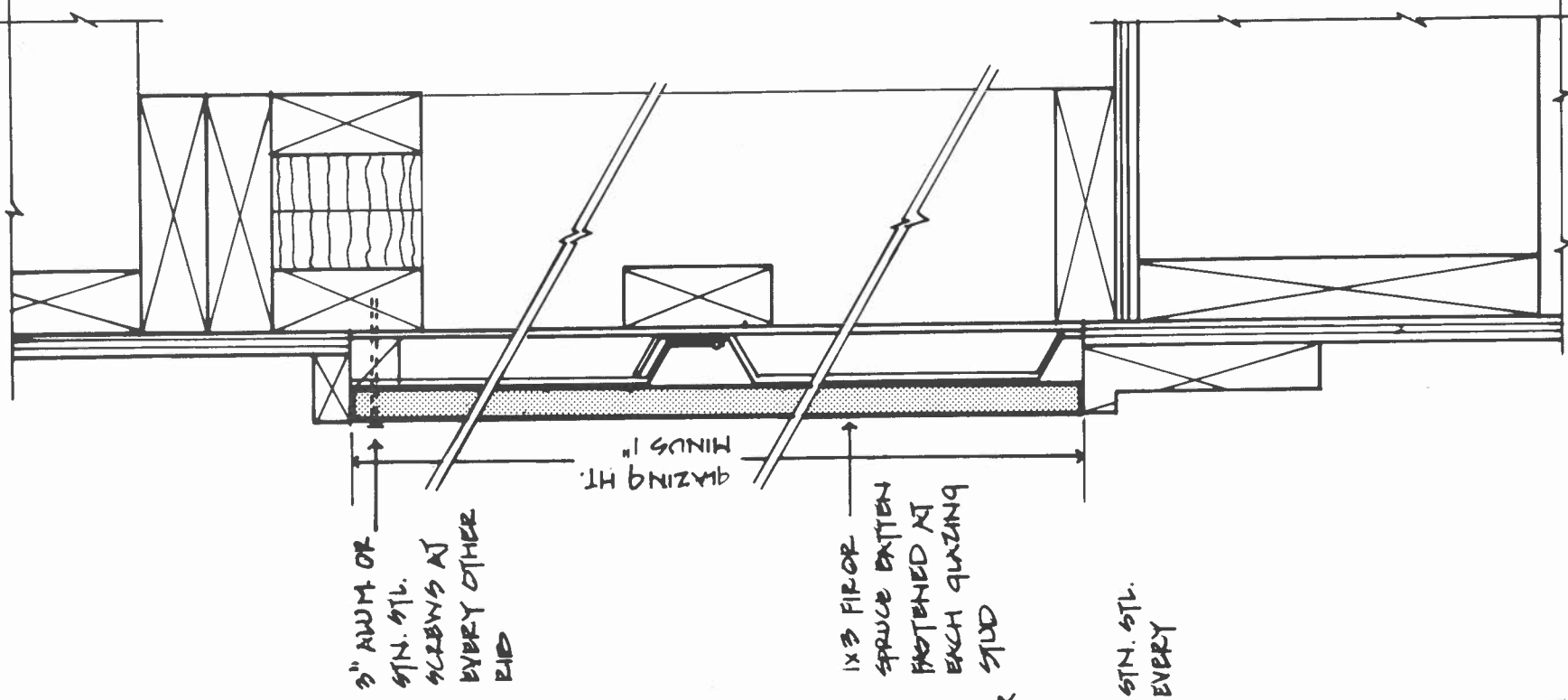
Church Hill, Harrisville, New Hampshire 03450

NOTICE

This design was developed for the United States Department of Energy. Neither TEA, Inc., nor the United States nor the United States Department of Energy nor any of their employees, nor any of their contractors, subcontractors, nor their employees makes any warranty, express or implied, or assumes any legal liability or responsibility for the accuracy, completeness, or usefulness of any information, apparatus, product, or process disclosed or contained on any of these plans, or represents that its use would not infringe upon privately owned rights.

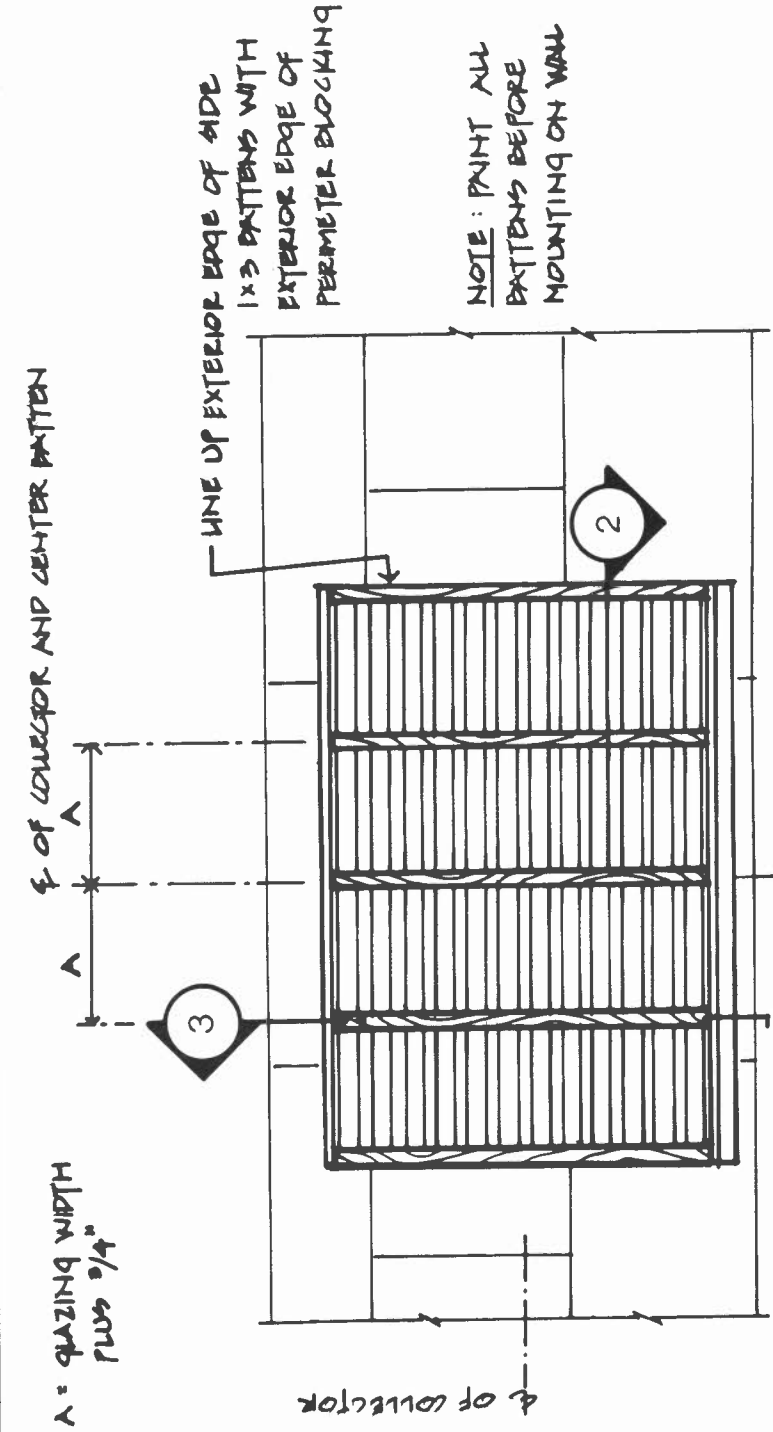
DRAWN BY: J.A. ADAMS

FEBRUARY, 1980



3 VERTICAL SECTION

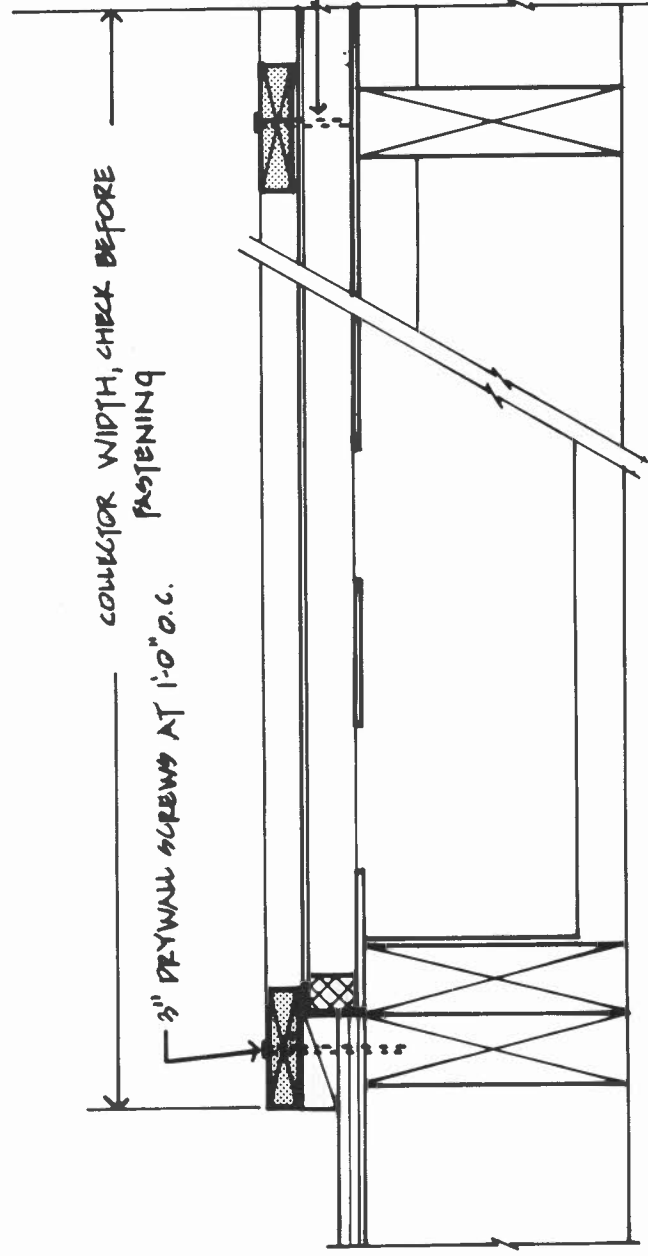
SCALE: 3" = 1'-0"



1 BATTENS

SCALE: 1/4" = 1'-0"

1



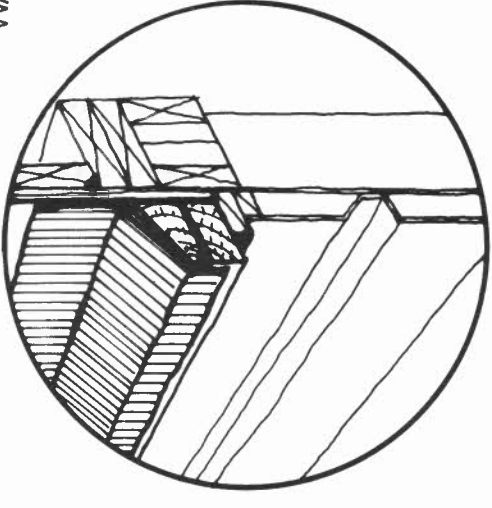
2 HORIZ. SECTION

SCALE: 3" = 1'-0"

2

GLAZING PREPARATION 7

WALL



MATERIALS: SEE TEXT FOR RECOMMENDATIONS

- 2x3 BLOCKING, 2x6 FINISH CEDAR SILL
- 1" x 1 3/4" BLOCKING
- 2x19" ALUMINUM FLASHING
- 3/8" x 1/2" PRE-SHIMMED GLAZING TAPE

FASTENERS:

- 10d-3", 30d-4 1/2", 10d-3 1/2" COMMON NAILS
- 1" GALVANIZED ROOFING NAILS
- 3/4" x 4" HEX HEAD LAG BOLTS

CAULK AT:
NOT APPLICABLE



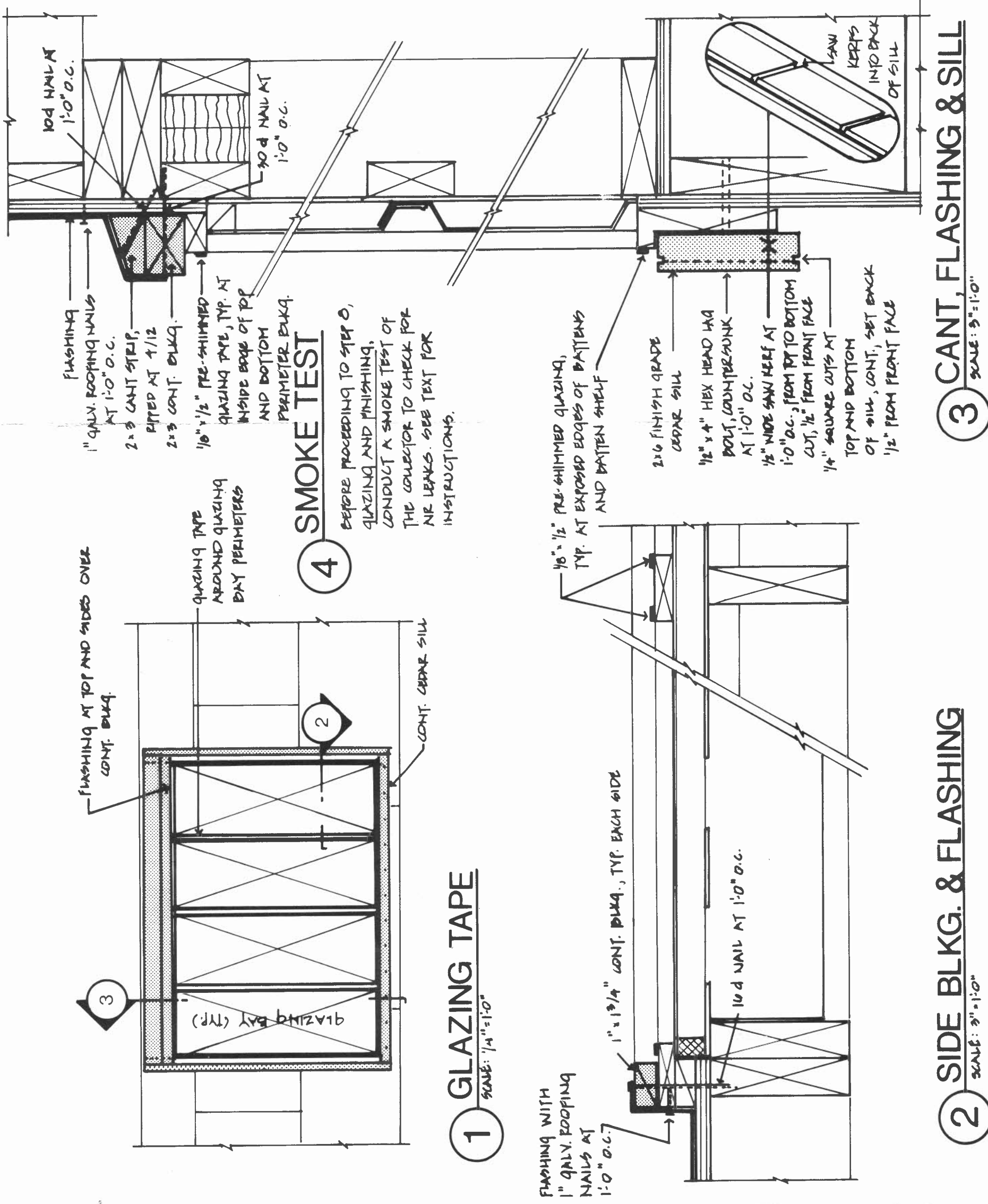
Church Hill, Harrisville, New Hampshire 03450

NOTICE

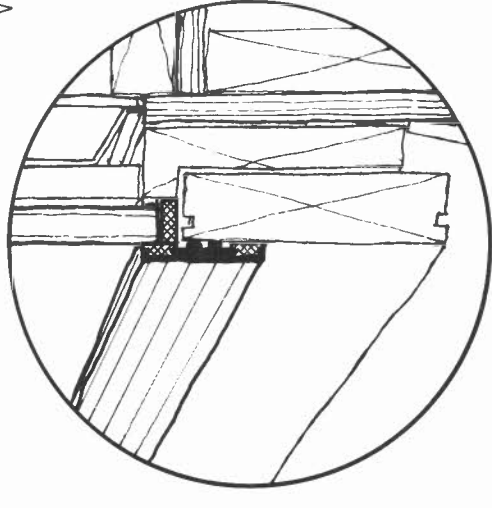
This design was developed for the United States Department of Energy. Neither TEA, Inc. nor the United States nor the United States Department of Energy nor any of their employees, nor any of their contractors, subcontractors, nor their employees makes any warranty, express or implied, or assumes any legal liability or responsibility for the accuracy, completeness, or usefulness of any information, apparatus, product, or process disclosed or contained on any of these plans, or represents that its use would not infringe upon privately owned rights.

DRAWN BY: J.A. ADAMS

FEBRUARY, 1980



GLAZING 8 & FINISHING WALL



MATERIALS:

1. 3/16" INS. SOLAR GLASS PANELS WITH 1/2" AIR SPACE
2. CY/ROtm ALUMINUM CLAMPING BAR AND UPPER EPDM GASKETS
3. RIGID FIBERGLASS BATT INSULATION

FASTENERS:

- ALUMINUM OR 18-8 STAINLESS STEEL
- #12 x 2" PHILLIPS PAN HEAD SHEET METAL SCREWS WITH NEOPRENE WASHERS

CAULK AT:

1. INTERSECTIONS OF CLAMPING BARS
2. AT ANY HOLES IN THERMO-PLY WHERE FASTENERS PUNCTURED IT, BEFORE INSULATING WALL CAVITIES BETWEEN STUDS



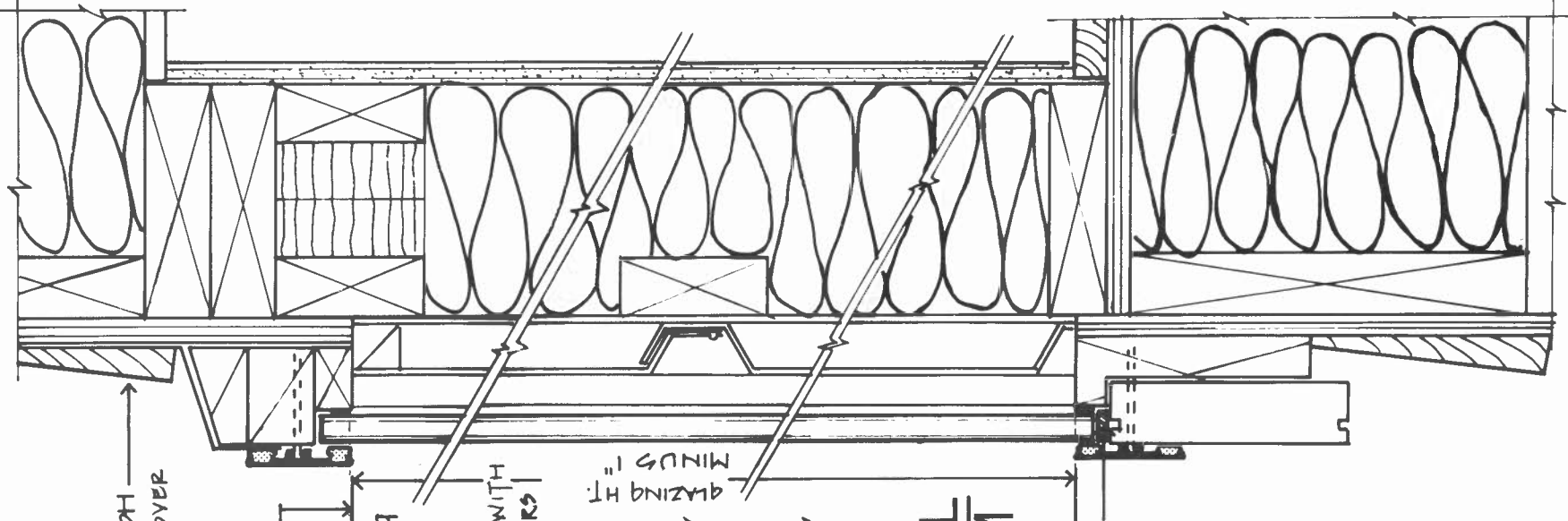
Church Hill, Harrisville, New Hampshire 03450

NOTICE

This design was developed for the United States Department of Energy. Neither TEA, Inc., nor the United States Department of Energy, nor any of their employees, nor any of their contractors, subcontractors, nor their employees makes any warranty, express or implied, or assumes any legal liability or responsibility for the accuracy, completeness, or usefulness of any information, apparatus, product, or process disclosed or contained on any of these plans, or represents that its use would not infringe upon privately owned rights.

DRAWN BY: J.A. ADAMS

FEBRUARY, 1980



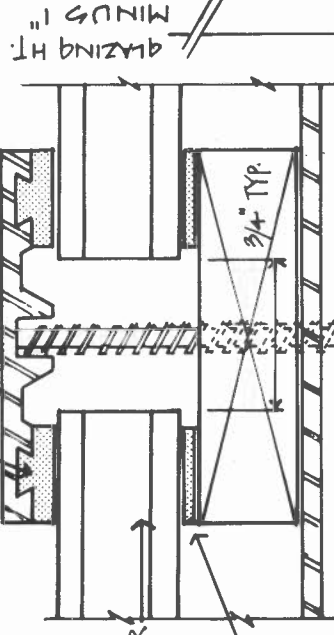
MITER CLAMPING BAR AND GASKET AT CORNERS. CAULK ALL INTERSECTIONS BETWEEN CLAMPING BARS.

LINE UP INSIDE EDGES OF CLAMPING BARS WITH INSIDE EDGES OF PERIMETER BLOCKING AT TOP AND BOTTOM

UPPER EPDM GASKET

CLAMPING BAR

#12 x 2" ALUM. OR STN. STL. SCREW WITH NEOPRENE WASHERS



4 CY/RO UNIVERSAL GLAZING SYSTEM

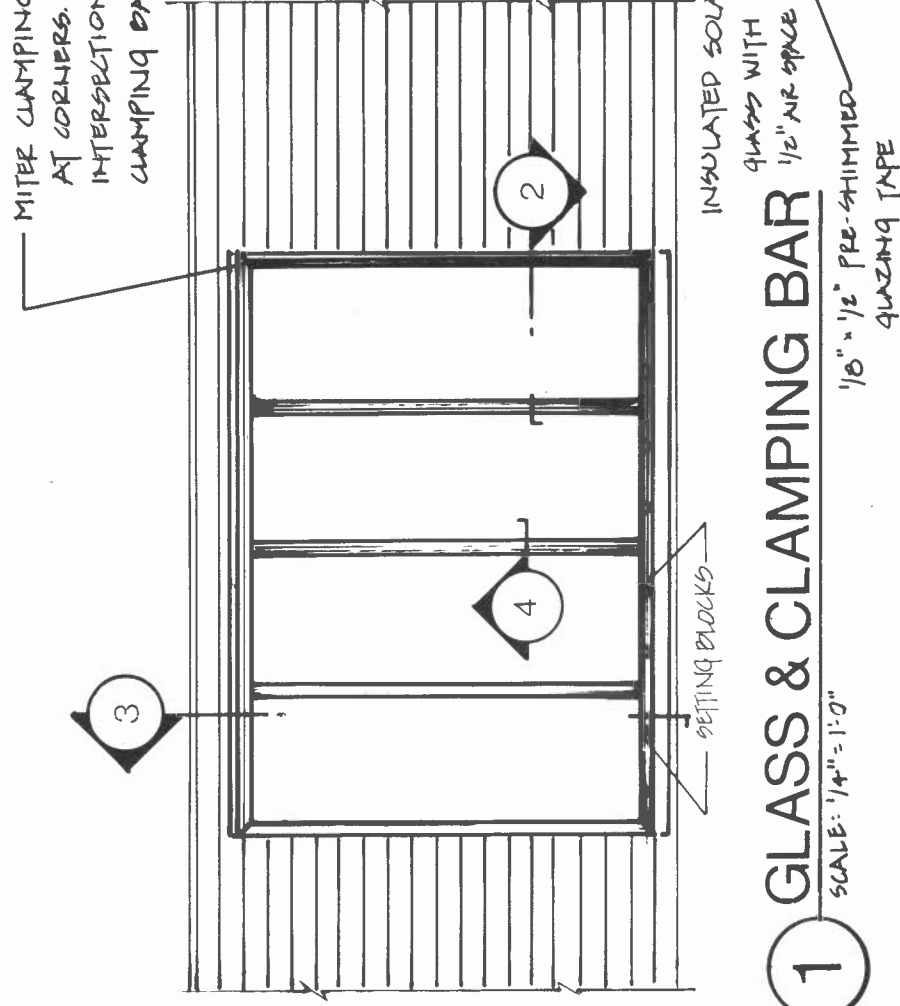
AVAILABLE FROM CY/RO N.T.S. (GLASS, SCREWS AND TAPE NOT SHOWN)

1/4" x 1" SETTING BLOCK AT QUARTER POINTS OF EACH GLAZING BAY

LINE UP EDGES OF CLAMPING BAR WITH EDGES OF BATTEN

FIBERGLASS BATT

INTERIOR FINISH AS DESIRED



1 GLASS & CLAMPING BAR

SCALE: 1/4" = 1'-0"

1/4" GAP AROUND ALL FOUR SIDES OF EACH PANEL OF GLASS

FASTEN CLAMPING BAR AT 8" O.C. AT PERIMETER OF COLLECTOR, INTO EVERY RID AT BATTENS FASTENED OVER ABSORBER PLATE

LINE UP INSIDE EDGE OF CLAMPING BAR WITH INSIDE EDGE OF BATTEN

1" RIGID FIBERGLASS BEHIND PANEL

2 INSULATION

SCALE: 3/8" = 1'-0"

3 FINISHING

SCALE: 3/8" = 1'-0"