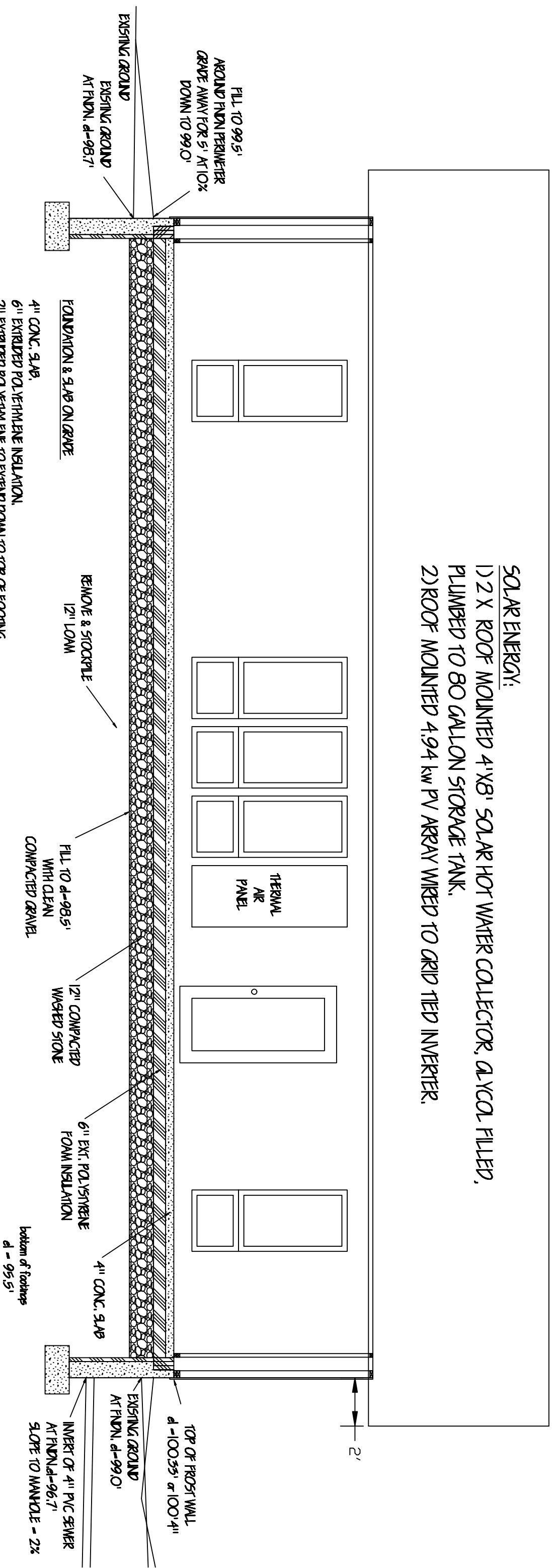


- SOLAR ENERGY:**
- 1) 2 X ROOF MOUNTED 4'X8' SOLAR HOT WATER COLLECTOR, GLYCOL FILLED, PLUMBED TO 80 GALLON STORAGE TANK.
 - 2) ROOF MOUNTED 4.94 kW PV ARRAY WIRED TO GRID TIED INVERTER.



MONTAGUE URBAN HOMESTEAD

OWNERS / DESIGNERS: DOUGLAS A. STEPHENS

TINA CLARKE

BUILDER:

BICK CORSA

AS-BUILT:

1-21-2010

SCALE:

1" = 4'

SHEET 2 OF 4